



DISTRICT SOLAR PROJECT UPDATE

June 8, 2016

Dr. Ruth Pérez, Superintendent
Ranita Browning, Interim Assistant Superintendent
Cindy DiPaola, Director Operations






PURPOSE OF PRESENTATION:

- **Review of layout changes at various schools and facilities**
- **Provide explanation of changes**
- **Next Steps for the Solar project**

BUENA VISTA HIGH SCHOOL



LEGEND

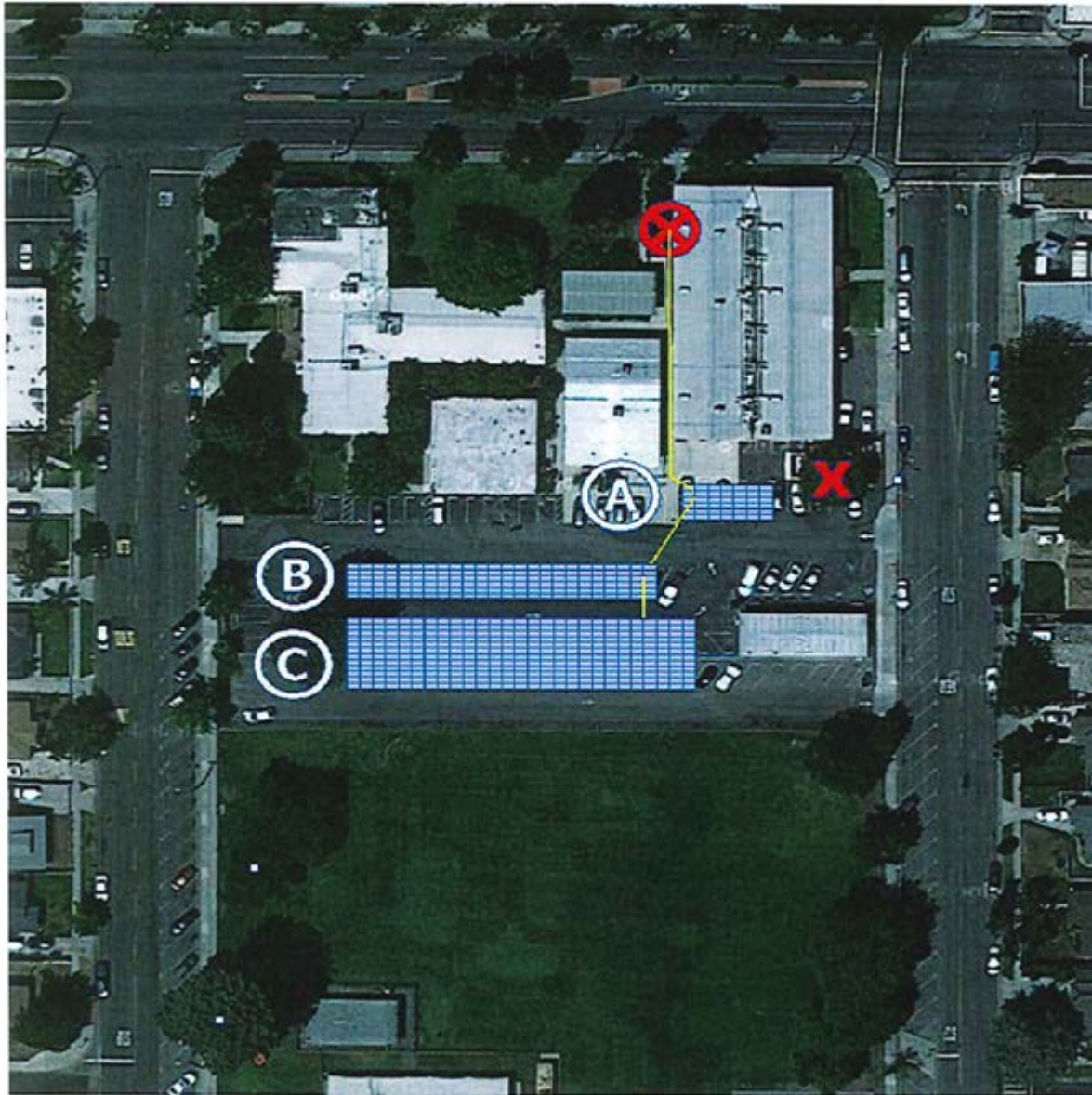
-  Solar Array
-  Meter Location ID
-  Point of Interconnection
-  Proposed Conduit Run
-  Initial Solar Array Location



Relocate Solar Array "B"

Relocate from north basketball/field area
to parking lot/south field

DISTRICT OFFICE



LEGEND



Solar Array



Meter Location ID



Point of Interconnection



Proposed Conduit Run



Initial Solar Array Location








Add Solar Array "B"

Additional capacity

GAINES ELEMENTARY SCHOOL



LEGEND

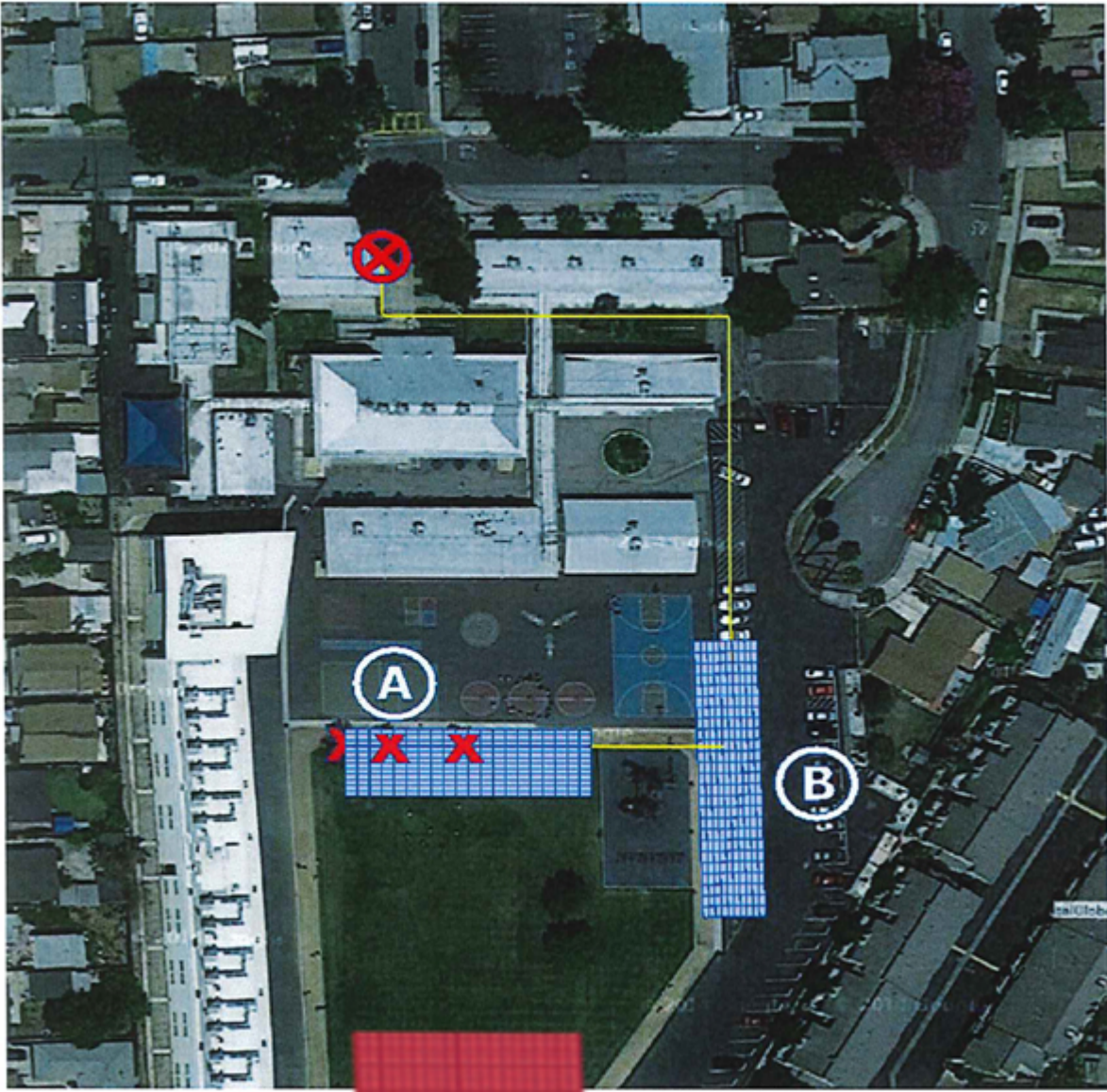
-  Solar Array
-  Meter Location ID
-  Point of Interconnection
-  Proposed Conduit Run
-  Initial Solar Array Location








Relocate Solar Array “A”

Relocate from Gaines south playfield to Jackson field

KEPPEL ELEMENTARY SCHOOL



LEGEND

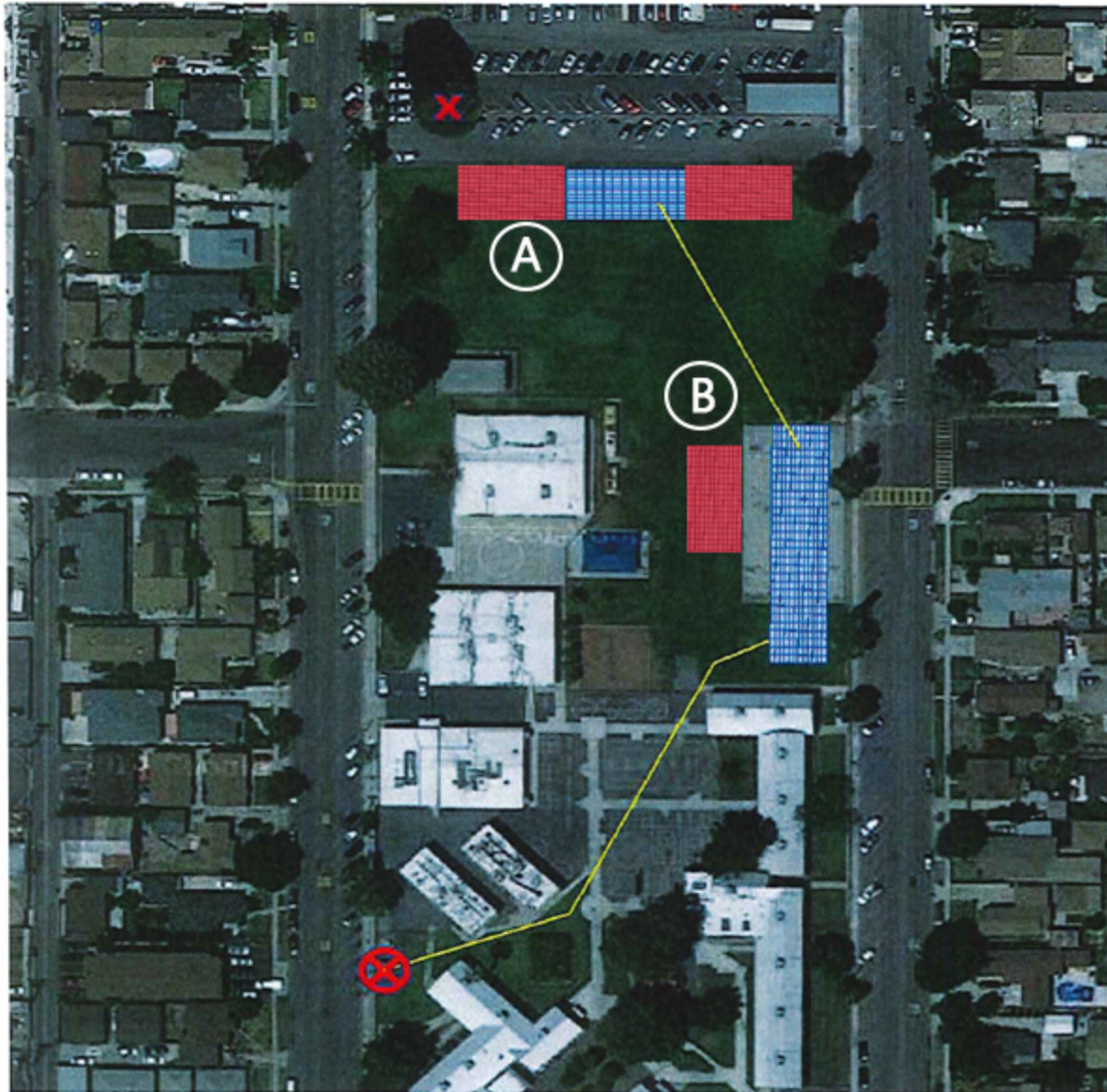
-  Solar Array
-  Meter Location ID
-  Point of Interconnection
-  Proposed Conduit Run
-  Initial Solar Array Location








Relocate Solar Array "A"

Relocate from south field to north field, adjacent to hardscape

LINCOLN ELEMENTARY SCHOOL



LEGEND

-  Solar Array
-  Meter Location ID
-  Point of Interconnection
-  Proposed Conduit Run
-  Initial Solar Array Location

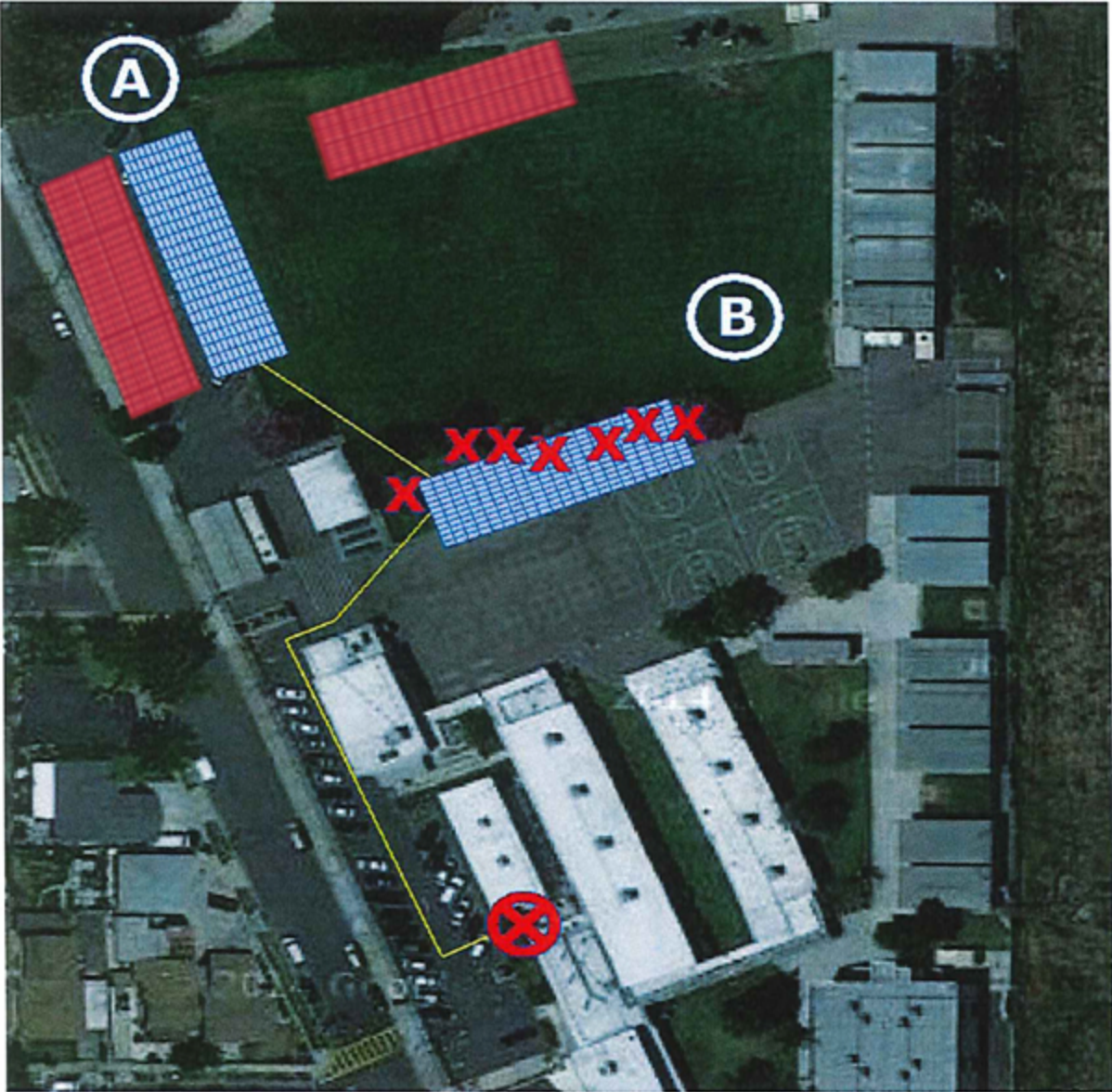







Relocate and increase
Solar Array "B"
Reduce Solar Array "A"

Relocate Solar Array "B" from
mid-field to hardscape/small
section of south field

Due to reduction of Solar Array
"A", no trees will be removed

LOS CERRITOS ELEMENTARY SCHOOL



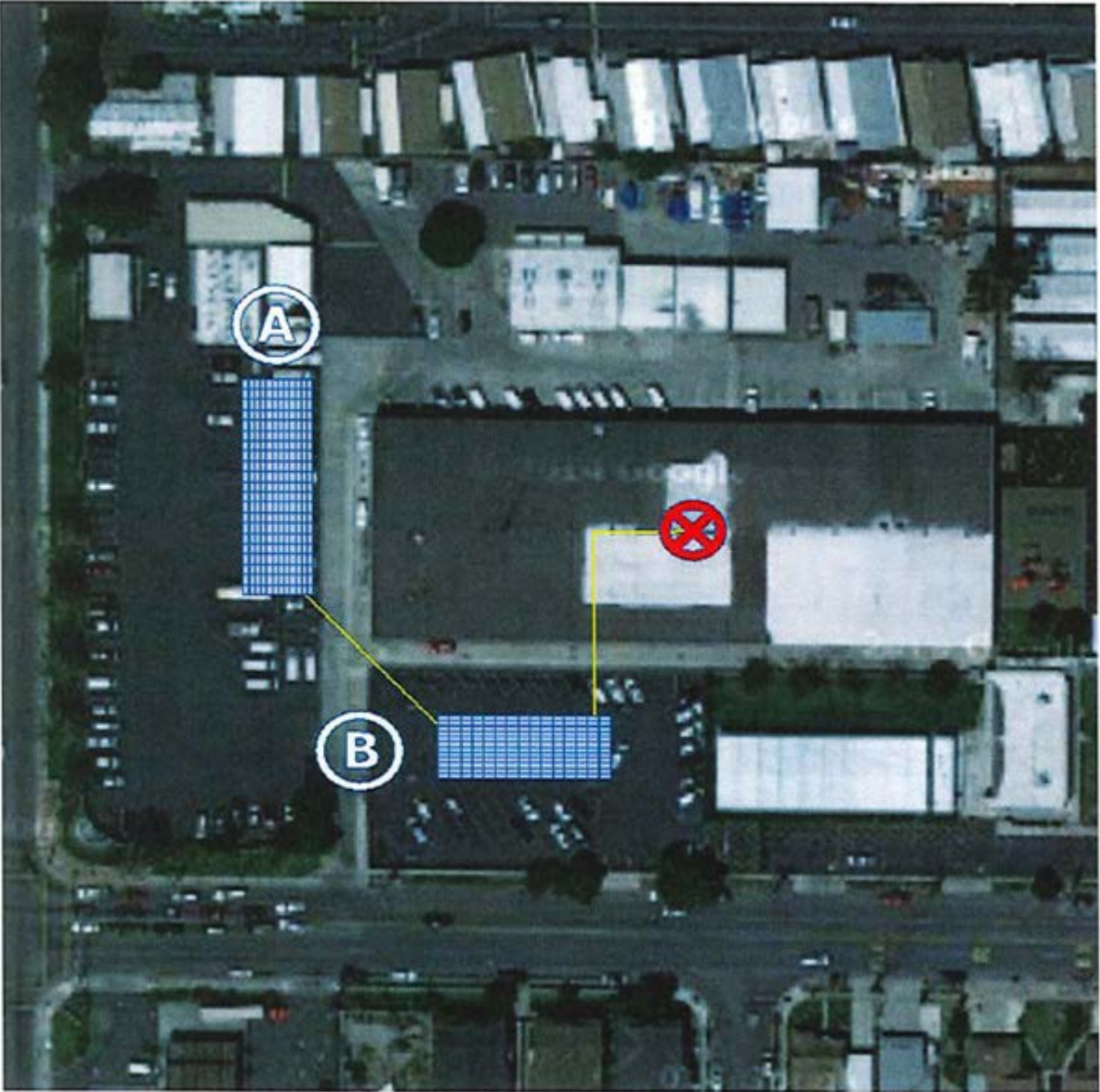
- LEGEND
-  Solar Array
 -  Meter Location ID
 -  Point of Interconnection
 -  Proposed Conduit Run
 -  Initial Solar Array Location






Relocate Solar Array “A”
and “B”

Relocate Solar Array “A” from
north field to west field/parking
lot

Relocate Solar Array “B” from
north field to south
field/hardscape

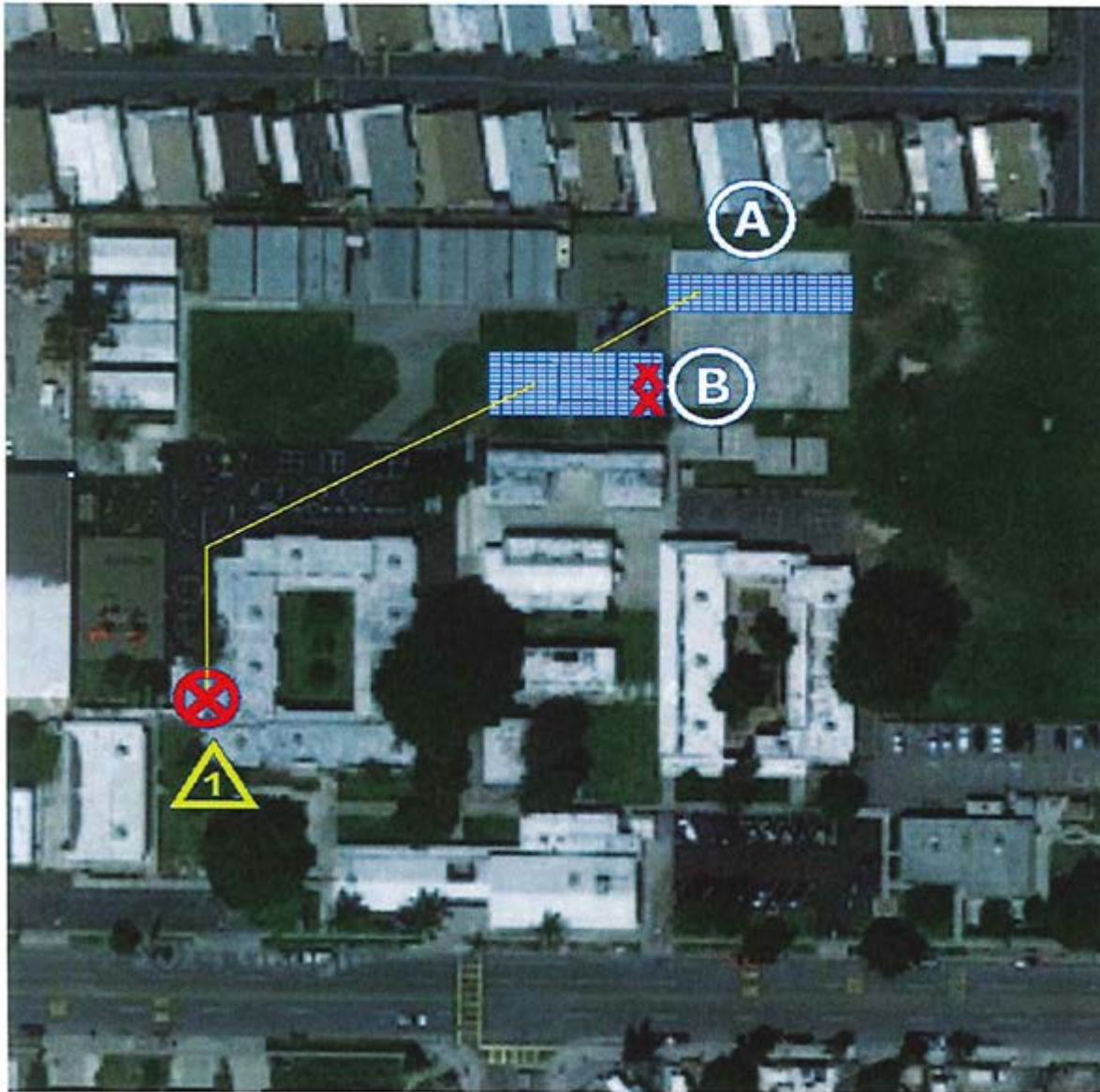
MAINTENANCE & OPERATIONS



- LEGEND
-  Solar Array
 -  Meter Location ID
 -  Point of Interconnection
 -  Proposed Conduit Run
 -  Initial Solar Array Location



MOKLER ELEMENTARY SCHOOL



LEGEND



Solar Array



Meter Location ID



Point of Interconnection



Proposed Conduit Run



Initial Solar Array Location



Add Solar Array "A" and
"B"

Add capacity

PARAMOUNT HIGH SCHOOL – WEST CAMPUS

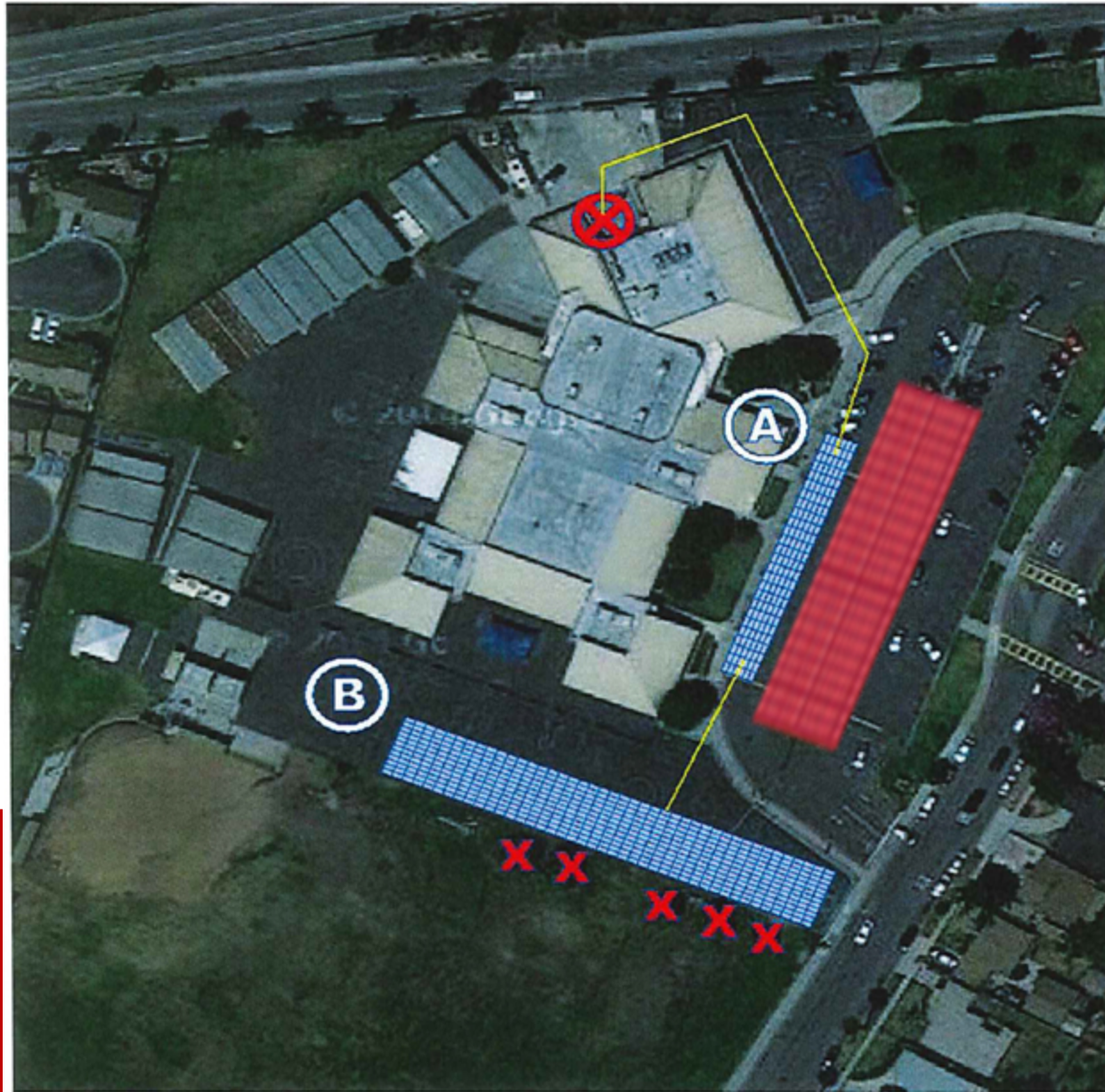


- LEGEND
- Solar Array
 - Meter Location ID
 - Point of Interconnection
 - Proposed Conduit Run
 - Initial Solar Array Location








Relocate Solar Array
"A"
Relocate from basketball
court area

ROOSEVELT ELEMENTARY SCHOOL



LEGEND

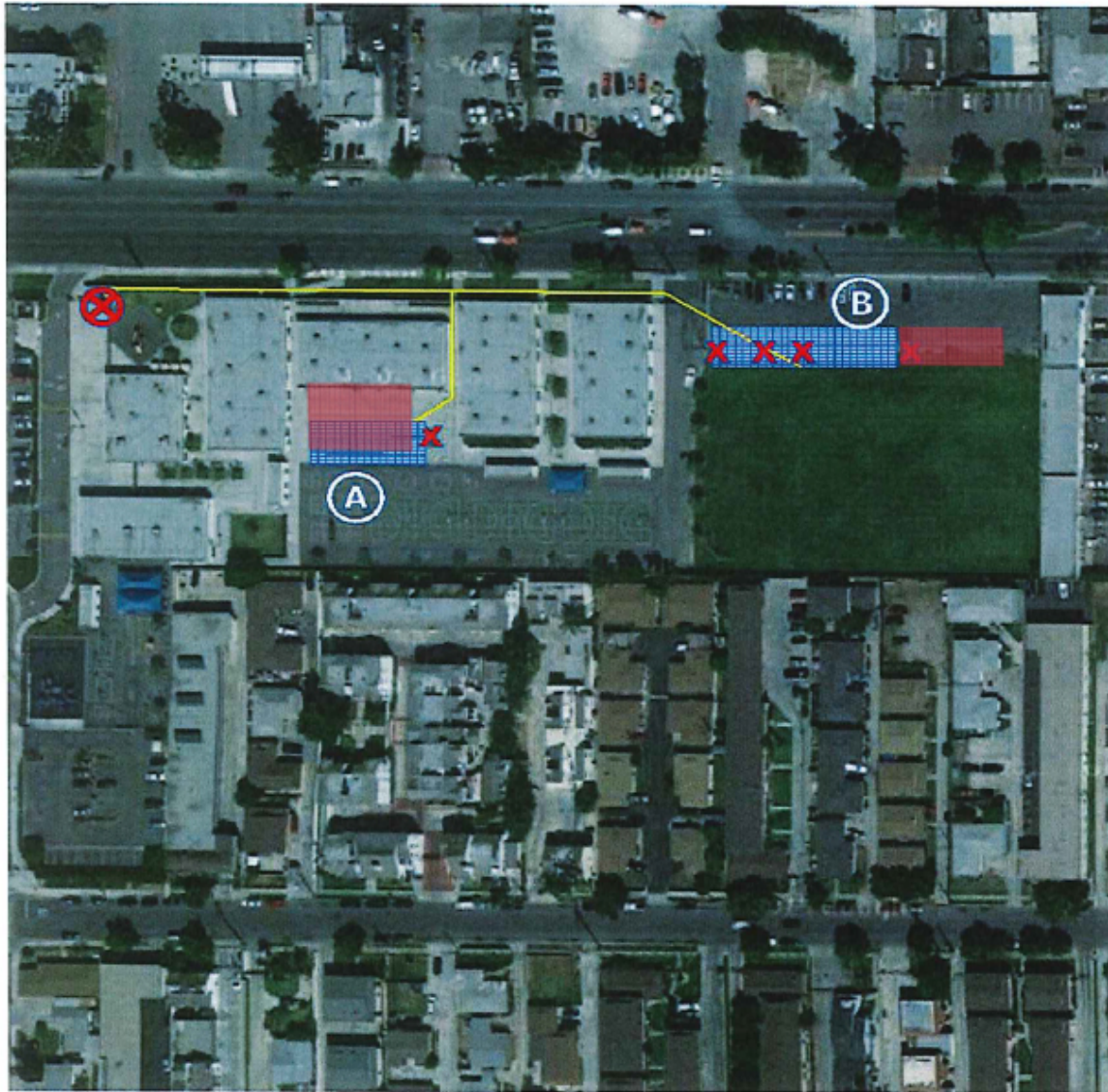
-  Solar Array
-  Meter Location ID
-  Point of Interconnection
-  Proposed Conduit Run
-  Initial Solar Array Location



Relocate Solar Array
"B"

Relocate from parking lot to
hardscape area

TANNER ELEMENTARY SCHOOL



LEGEND



Solar Array



Meter Location ID



Point of Interconnection



Proposed Conduit Run



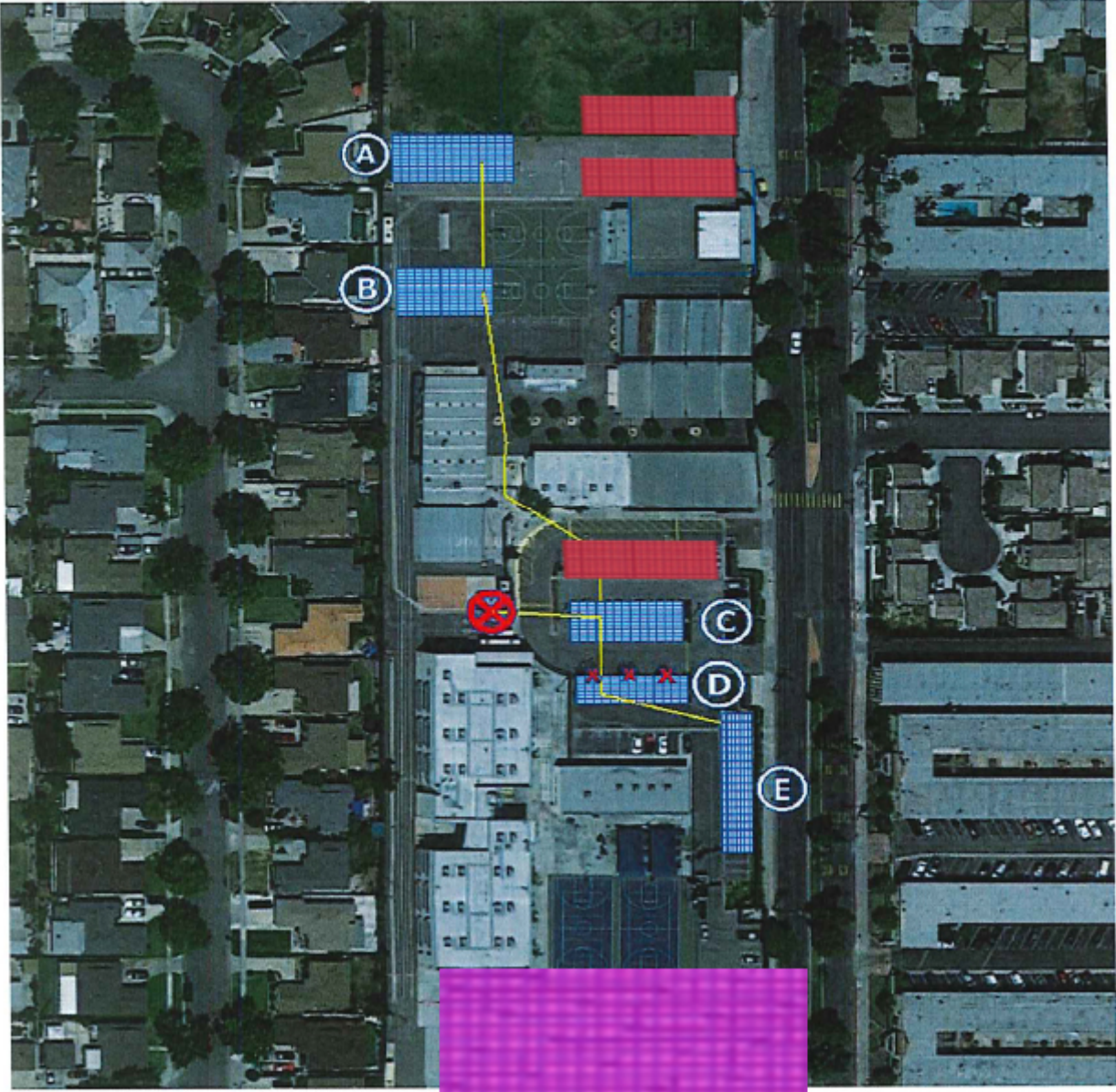
Initial Solar Array Location









Relocate Solar Array "B"
Increase size Solar Array "A"
Reduce size of Solar Array
"B"

Relocate Solar Array "B" posts from
playfield field area to north field

ZAMBONI MIDDLE SCHOOL



- LEGEND**
-  Solar Array
 -  Meter Location ID
 -  Point of Interconnection
 -  Proposed Conduit Run
 -  Initial Solar Array Location
 -  Alternate Solar Array

Relocate Solar Array “A” and B”
 Increase size of Solar “A”
 Eliminate Solar array

Relocate from new north parking lot area to west side hardscape

Eliminate Solar Array in main driveway

NEXT STEPS:

- PFMG Design Team to DSA for approval
- Contracts for DSA Inspector and Soils tests
- Project Scheduling
- Project Monitoring
- Solar output and cost tracking
- PHS Solar - RFP

QUESTIONS